

# Ardstraw Jubilee Primary School



## **SAFEGUARDING AND CHILD PROTECTION POLICY 2022**

Date Ratified by Board of Governors: 12<sup>th</sup> October 2022

Date of Review: October 2025

Updated with Operation Encompass procedures: 1<sup>st</sup> February 2023

## **CONTENTS**

- 1. Our School's Mission Statement**
- 2. Related Policies**
- 3. The School Safeguarding Team**
- 4. Operation Encompass**
- 5. Roles and Responsibilities**
- 6. Definitions of Harm**
- 7. Responding to a Safeguarding Concern**
- 8. Consent, Confidentiality, Information Sharing and Record Keeping**
- 9. Safe Recruitment Procedures**
- 10. Code of Conduct**
- 11. The Preventative Curriculum**
- 12. Monitoring and Evaluation**
- 13. Appendices**
  - 13.1 Appendix 1 Specific Types of Abuse**
  - 13.2 Appendix 2 Children with Increased Vulnerabilities**
  - 13.3 Appendix 3 How a Parent Can Make a Complaint**
  - 13.4 Appendix 4 Procedure Where the School Has Concerns about Possible Abuse**
  - 13.5 Appendix 5 Dealing with Allegations of Abuse against a Member of Staff**

## **11.6 Appendix 6 Code of Conduct**

## **11.7 Appendix 7 Note of Concern**

### **Annex Covid 19 Procedures**

#### **1 Child Protection Ethos**

At Ardstraw Jubilee Primary School we strive to provide a happy, caring, supportive environment where our children are nurtured to enable them to reach their full potential. Our focus is the whole child. We aim to develop children who are confident, creative, independent and co-operative learners; who approach challenges with openness, enthusiasm and a willingness to solve problems. We encourage children to have respect for individual differences, to become active contributors to society and life-long learners. We welcome the active involvement of parents and the local community in our school.

We in Ardstraw Jubilee have a responsibility for the safeguarding and child protection of the children in our care and we will carry out this duty by providing a caring, supportive and safe environment, where each child is valued for his or her unique talents and abilities, and in which all our young people can learn and develop to their full potential. All staff, teaching and non-teaching should be alert to the signs of possible abuse and should know the procedures to be followed. This policy sets out guidance on the action, which is required where abuse or harm to a child is suspected and outlines referral procedures within our school.

#### **Key Principles of Safeguarding and Child Protection**

The general principles, which underpin our work, are those set out in the UN Convention on the Rights of the Child and are enshrined in the Children (Northern Ireland) Order 1995, "Co-operating to safeguard children and young people in Northern Ireland" (DHSSPSNI, 2017), the Department of Education (Northern Ireland) guidance "Safeguarding and Child Protection in Schools" Circular 2017/04 (amended September 2019; updated June 2020) and the SBNI Core Child Protection Policy and Procedures (2017).

The following principles form the basis of our Child Protection Policy:

- The child or young person's welfare is paramount;
- The voice of the child or young person should be heard;
- Parents are supported to exercise parental responsibility and families helped stay together;
- Partnership;

- Prevention;
- Responses should be proportionate to the circumstances;
- Protection; and
- Evidence based and informed decision making.

## **2 Other Related Policies**

The school has a duty to ensure that safeguarding permeates all activities and functions. The child protection policy therefore complements and supports a range of other school policies including:

- Anti-Bullying Policy
- Attendance Policy
- Positive Behaviour Policy
- Code of Conduct
- Complaints policy
- Data protection Policy
- Educational Visits
- Online Safety Policy
- Social Media Policy
- First Aid and Administration of Medicines
- Health and Safety Policy
- Intimate Care
- Relationships and Sexuality Education
- PDMU Policy
- Special Educational Needs
- Use of Reasonable Force/Safe Handling
- Whistleblowing policy

These policies are available to parents and any parent wishing to have a copy should contact the School office or visit the school website at [www.ardstrawjubileeprimaryschool.co.uk](http://www.ardstrawjubileeprimaryschool.co.uk)

## **3 School Safeguarding Team**

The following are members of the school's Safeguarding Team:

- Chair of the Board of Governors - Rev. David Reid
- Designated Governor for Child Protection - Mr Richard Watson
- Principal - Mrs Julie Kelly
- Designated Teacher - Mrs Alison Porter
- Deputy Designated Teacher(s) - Mrs Debby McGerrigle

#### **4 Operation Encompass**

We are an Operation Encompass school. Operation Encompass is an early intervention partnership between local Police and our school, aimed at supporting children who are victims of domestic violence and abuse. As a school, we recognise that children's exposure to domestic violence is a traumatic event for them.

Children experiencing domestic abuse are negatively impacted by this exposure. Domestic abuse has been identified as an Adverse Childhood Experience and can lead to emotional, physical and psychological harm. Operation Encompass aims to mitigate this harm by enabling the provision of immediate support. This rapid provision of support within the school environment means children are better safeguarded against the short, medium and long-term effects of domestic abuse.

As an Operation Encompass school, when the police have attended a domestic incident and one of our pupils is present, they will make contact with the school at the start of the next working day to share this information with a member of the school safeguarding team. This will allow the school safeguarding team to provide immediate emotional support to this child as well as giving the designated teacher greater insight into any wider safeguarding concerns.

This information will be treated in strict confidence, like any other category of child protection information. It will be processed as per DE Circular 2020/07 'Child Protection Record Keeping in Schools' and a note will be made in the child's child protection file. The information received on an Operation Encompass call from the Police will only be shared outside of the safeguarding team on a proportionate and need to know basis. All members of the safeguarding team will complete online Operation Encompass training, so they are able to take these calls. Any staff responsible for answering the phone at school will be made aware of Operation Encompass and the need to pass these calls on with urgency to a member of the Safeguarding team.

Further information see [The Domestic Abuse Information Sharing with Schools etc. Regulations \(Northern Ireland\) 2022.](#)

## **5 Roles and Responsibilities**

### **Board of Governors must ensure that:**

- A Designated Governor for Child Protection is appointed.
- A Designated and Deputy Designated Teacher are appointed in their schools.
- They have a full understanding of the roles of the Designated and Deputy Designated Teachers for Child Protection.
- Safeguarding and child protection training is given to all staff and governors including refresher training.
- Relevant safeguarding information and guidance is disseminated to all staff and governors with the opportunity to discuss requirements and impact on roles and responsibilities.
- The school has a Child Protection Policy which is reviewed annually and parents and pupils receive a copy of the child protection policy and complaints procedure every two years
- The school has an Anti-Bullying Policy which is reviewed at intervals of no more than four years and maintains a record of all incidents of bullying or alleged bullying. See the Addressing Bullying in Schools Act (NI) 2016.
- The school ensures that other safeguarding policies are reviewed at least every 3 years or as specified in relevant guidance
- There is a code of conduct for all adults working in the school
- All school staff and volunteers are recruited and vetted, in line with DE Circular 2012/19
- They receive a full annual report on all child protection matters (It is best practice that they receive a termly report of child protection activities). This report should include details of the preventative curriculum and any initiatives or awareness raising undertaken within the school, including training for staff.
- The school maintains the following child protection records in line with DE Circulars 2015/13 Dealing with Allegations of Abuse Against a Member of Staff and 2020/07 Child Protection: Record Keeping in Schools: Safeguarding and child protection concerns; disclosures of abuse; allegations against staff and actions taken to investigate and deal with outcomes; staff induction and training.

### **Chair of Board of Governors**

The Chairperson of the BoG plays a pivotal role in creating and maintaining the safeguarding ethos within the school environment.

In the event of a safeguarding or child protection complaint being made against the Principal, it is the Chairperson who must assume lead responsibility for managing the complaint/allegation in keeping with guidance issued by the Department (and relevant

guidance from other Departments when it comes to other early years settings), employing authorities, and the school's own policies and procedures.

The Chairperson is responsible for ensuring child protection records are kept and for signing and dating annually the Record of Child Abuse Complaints against staff members even if there have been no entries.

### **Designated Governor for Child Protection**

The BoG delegates a specific member of the governing body to take the lead in safeguarding/child protection issues in order to advise the governors on: -

- The role of the designated teachers;
- The content of child protection policies;
- The content of a code of conduct for adults within the school;
- The content of the termly updates and full Annual Designated Teachers Report;
- Recruitment, selection, vetting and induction of staff.

### **Designated Teacher for Child Protection**

Every school is required to have a DT and DDT with responsibility for child protection. These are highly skilled roles developed and supported through a structured training programme, requiring knowledge and professional judgement on complex and emotive issues. The role involves:

- The induction and training of all school staff including support staff.
- Being available to discuss safeguarding or child protection concerns of any member of staff.
- Having responsibility for record keeping of all child protection concerns.
- Maintaining a current awareness of early intervention supports and other local services e.g. Family Support Hubs.
- Making referrals to Social Services or PSNI where appropriate.
- Liaison with the EA Designated Officers for Child Protection.
- Keeping the school Principal informed.
- Taking the lead responsibility for the development of the school's child protection policy.
- The promotion of a safeguarding and child protection ethos in the school.
- Compiling written reports to the BoG regarding child protection

### **Deputy Designated Teacher for Child Protection**

The role of the DDT is to work co-operatively with the DT in fulfilling his/her responsibilities.

It is important that the DDT works in partnership with the DT so that he/she develops sufficient knowledge and experience to undertake the duties of the DT when required.

DDTs are also provided with the same specialist training by CPSS to help them in their role.

### **The School Principal**

The Principal, as the Secretary to the BoG, will assist the BoG to fulfil its safeguarding and child protection duties, keeping them informed of any changes to guidance, procedure or legislation relating to safeguarding and child protection, ensuring any circulars and guidance from DE are shared promptly, and termly inclusion of child protection activities on the BoG meeting agenda. In addition, the Principal takes the lead in managing child protection concerns relating to staff.

The Principal has delegated responsibility for establishing and managing the safeguarding and child protection systems within the school. This includes the appointment and management of suitable staff to the key roles of DT and DDT Designated Teacher posts and ensuring that new staff and volunteers have safeguarding and child protection awareness sessions as part of an induction programme.

It is essential that there is protected time and support to allow the DTs to carry out this important role effectively and that DTs are selected based on knowledge and skills required to fulfil the role.

The Principal must ensure that parents and pupils receive a copy, or summary, of the Child Protection Policy at intake and, at a minimum, every two years.

### **Other Members of School Staff**

- Members of staff **must** refer concerns or disclosures initially to the Designated Teacher for Child Protection or to the Deputy Designated Teacher if he/she is not available and if neither of these are available speak to the principal or in their absence contact the EA child protection team.
- Class teachers should complete the Note of Concern if there are safeguarding concerns such as: poor attendance and punctuality, poor presentation, changed or unusual behaviour including self-harm and suicidal thoughts, deterioration in educational progress, discussions with parents about concerns relating to their child, concerns about pupil abuse or serious bullying and concerns about home circumstances including disclosures of domestic abuse.
- **Staff should not** give children a guarantee of total confidentiality regarding their disclosures, should not investigate nor should they ask leading questions

### **Support Staff**

- If any member of the support staff has concerns about a child or staff member, they should report these concerns to the Designated Teacher or Deputy Designated



Teacher if he/she is not available. A detailed written record of the concerns will be made and any further necessary action will be taken.

## Parents

***The primary responsibility for safeguarding and protection of children rests with parents who should feel confident about raising any concerns they have in relation to their child.***

- Parents can play their part in safeguarding by informing the school.
- If the child has a medical condition or educational need.
- If there are any Court Orders relating to the safety or wellbeing of a parent or child.
- If there is any change in a child's circumstances for example - change of address, change of contact details, change of name, change of parental responsibility.
- If there are any changes to arrangements about who brings their child to and from school.
- If their child is absent and should send in a note on the child's return to school. This assures the school that the parent/carer knows about the absence. More information on parental responsibility can be found on the EA website at: [www.eani.org.uk/schools/safeguarding-and-child-protection](http://www.eani.org.uk/schools/safeguarding-and-child-protection)

## 6 Child Protection Definitions

### Definition of Harm

*(Co-operating to Safeguard Children and young People in Northern Ireland August 2017)*  
Harm can be suffered by a child or young person by acts of abuse perpetrated upon them by others. Abuse can happen in any family, but children may be more at risk if their parents have problems with drugs, alcohol and mental health, or if they live in a home where domestic abuse happens. Abuse can also occur outside of the family environment. Evidence shows that babies and children with disabilities can be more vulnerable to suffering abuse.

Although the harm from the abuse might take a long time to be recognisable in the child or young person, professionals may be in a position to observe its indicators earlier, for example, in the way that a parent interacts with their child. Effective and ongoing information sharing is key between professionals.

**Harm from abuse is not always straightforward to identify and a child or young person may experience more than one type of harm.**

Harm can be caused by:

- Sexual abuse
- Emotional abuse
- Physical abuse
- Neglect

- Exploitation

**Sexual Abuse** occurs when others use and exploit children sexually for their own gratification or gain or the gratification of others. Sexual abuse may involve physical contact, including assault by penetration (for example, rape, or oral sex) or non-penetrative acts such as masturbation, kissing, rubbing and touching outside clothing. It may include non-contact activities, such as involving children in the production of sexual images, forcing children to look at sexual images or watch sexual activities, encouraging children to behave in sexually inappropriate ways or grooming a child in preparation for abuse (including via e-technology). Sexual abuse is not solely perpetrated by adult males. Women can commit acts of sexual abuse, as can other children.

Physical Indicators	Behavioural Indicators
bruises, scratches, bite marks or other injuries to breasts, buttocks, lower abdomen or thighs; bruises or bleeding in genital or anal areas; torn, stained or bloody underclothes; chronic ailments such as recurrent abdominal pains or headaches; difficulty in walking or sitting; frequent urinary infections; avoidance of lessons especially PE, games, showers; unexplained pregnancies where the identity of the father is vague; anorexia/gross over-eating.	What the child tells you; Withdrawn; chronic depression; excessive sexual precociousness; seductiveness; children having knowledge beyond their usual frame of reference e.g. young child who can describe details of adult sexuality; parent/child role reversal; over concerned for siblings; poor self-esteem; self-devaluation; lack of confidence; peer problems; lack of involvement; massive weight change; suicide attempts (especially adolescents); hysterical/angry outbursts; lack of emotional control; sudden school difficulties e.g. deterioration in school work or behaviour; inappropriate sex play; repeated attempts to run away from home; unusual or bizarre sexual themes in children's art work or stories; vulnerability to sexual and emotional exploitation; promiscuity; exposure to pornographic material

**Emotional Abuse** is the persistent emotional maltreatment of a child. It is also sometimes called psychological abuse and it can have severe and persistent adverse effects on a child's emotional development.

Emotional abuse may involve deliberately telling a child that they are worthless, or unloved and inadequate. It may include not giving a child opportunities to express their views, deliberately silencing them, or 'making fun' of what they say or how they communicate. Emotional abuse may involve bullying - including online bullying through social networks, online games or mobile phones - by a child's peers.

Physical Indicators	Behavioural Indicators
Well below average in height and weight; "failing to thrive"; poor hair and skin; alopecia; swollen extremities i.e. icy cold and swollen hands and feet; recurrent diarrhoea, wetting and soiling; sudden speech disorders; signs of self-mutilation; signs of solvent abuse (e.g. mouth sores, smell of glue, drowsiness); extremes of physical, mental and emotional development (e.g. anorexia, vomiting, stooping).	Apathy and dejection; inappropriate emotional responses to painful situations; rocking/head banging; inability to play; indifference to separation from family indiscriminate attachment; reluctance for parental liaison; fear of new situation; chronic runaway; attention seeking/needing behaviour; poor peer relationships.

**Physical Abuse** is deliberately physically hurting a child. It might take a variety of different forms, including hitting, biting, pinching, shaking, throwing, poisoning, burning or scalding, drowning or suffocating a child.

Physical Indicators	Behavioural Indicators
Unexplained bruises - in various stages of healing grip marks on arms; slap marks; human bite marks; welts; bald spots; unexplained/untreated burns; especially cigarette burns (glove like); unexplained fractures; lacerations or abrasions; untreated injuries; bruising on both sides of the ear - symmetrical bruising should be treated with suspicion;	Self- destructive tendencies; aggression to other children; behavioural extremes (withdrawn or aggressive); appears frightened or cowed in presence of adults; improbable excuses to explain injuries; chronic runaway; uncomfortable with physical contact; coming to school early or staying last as if afraid to be at home; clothing inappropriate to weather - to hide part of body; violent themes in art work or stories

injuries occurring in a time pattern e.g. every Monday	
--	--

**Neglect** is the failure to provide for a child's basic needs, whether it be adequate food, clothing, hygiene, supervision or shelter that is likely to result in the serious impairment of a child's health or development. Children who are neglected often also suffer from other types of abuse.

Physical Indicators	Behavioural Indicators
Looks very thin, poorly and sad; constant hunger; lack of energy; untreated medical problems; special needs of child not being met; constant tiredness; inappropriate dress; poor hygiene; repeatedly unwashed; smelly; repeated accidents, especially burns.	Tired or listless (falls asleep in class); steals food; compulsive eating; begging from class friends; withdrawn; lacks concentration; misses school medicals; reports that there is no carer is at home; low self-esteem; persistent non-attendance at school; exposure to violence including unsuitable videos.

**Exploitation** is the intentional ill-treatment, manipulation or abuse of power and control over a child or young person; to take selfish or unfair advantage of a child or young person or situation, for personal gain. It may manifest itself in many forms such as child labour, slavery, servitude, and engagement in criminal activity, begging, benefit or other financial fraud or child trafficking. It extends to the recruitment, transportation, transfer, harbouring or receipt of children for the purpose of exploitation. Exploitation can be sexual in nature.

Although 'exploitation' is not included in the categories of registration for the Child Protection Register, professionals should recognise that the abuse resulting from or caused by the exploitation of children and young people can be categorised within the existing CPR categories as children who have been exploited will have suffered from physical abuse, neglect, emotional abuse, sexual abuse or a combination of these forms of abuse.

Please find attached a link to additional information regarding signs and symptoms of abuse from the SBNI Regional Core Policies and Procedures guidance.

<https://proceduresonline.com/trixcms/media/1248/signs-and-symptoms-of-child-abuse-and-neglect.pdf>.

**A child may suffer or be at risk of suffering from one or more types of abuse and abuse may take place on a single occasion or may occur repeatedly over time.**

## **Specific Types of Abuse**

In addition to the types of abuse described above there are also some specific types of abuse that we in Ardstraw Jubilee Primary School are aware of and have therefore included them in our policy. Please see these in [Appendix 1](#)

## **Children with Increased Vulnerabilities**

Some children have increased risk of abuse due to specific vulnerabilities such as disability, lack of fluency in English and sexual orientation. We have included information about children with increased vulnerabilities in our policy.

Please see these in [Appendix 2](#)

## **7 Responding to Safeguarding and Child Protection Concerns**

Safeguarding is more than child protection. Safeguarding begins with promotion and preventative activity which enables children and young people to grow up safely and securely in circumstances where their development and wellbeing is not adversely affected. It includes support to families and early intervention to meet the needs of children and continues through to child protection. Child protection refers specifically to the activity that is undertaken to protect individual children or young people who are suffering, or are likely to suffer significant harm<sup>1</sup>.

### **How a Parent Can Raise a Concern**

In Ardstraw Jubilee Primary School we aim to work closely with parents/guardians in supporting all aspects of their child's development and well-being. Any concerns a parent may have will be taken seriously and dealt with in a professional manner.

If a parent has a concern they can talk to the class teacher, the Designated or Deputy Designated Teacher for child protection or the Principal.

If they are still concerned they may talk to the Chair of the Board of Governors.

At any time, a parent may talk to a social worker in the local Gateway team or to the PSNI Central Referral Unit. Details of who to contact are shown in the flowchart in [Appendix 3](#)

---

<sup>1</sup> Co-Operating to Safeguard Children and Young People in Northern Ireland (March 2016)  
<https://www.health-ni.gov.uk/publications/co-operating-safeguard-children-and-young-people-northern-ireland>

**Where school has concerns or has been given information about possible abuse by someone other than a member of staff.**

In Ardstraw Jubilee P.S. if a child makes a disclosure to a teacher or other member of staff which gives rise to concerns about possible abuse, or if a member of staff has concerns about a child, the member of staff will complete a Note of Concern (see [Appendix 7](#)) and act promptly. **They will not investigate** - this is a matter for Social Services - but will discuss these concerns with the Designated Teacher or with the Deputy Designated Teacher if he/she is not available.

The Designated Teacher will consult with the Principal or other relevant staff always taking care to avoid undue delay. If the Principal is not available, the Designated Teacher will consult with the Deputy Designated Teacher and or the Chair of the BoG. If required advice may be sought from the Education Authority Designated Officer for Child Protection. The Designated Teacher may also seek clarification from the child or young person, their parent/carer.

If a child protection referral is not required the school may consider other options including monitoring, signposting or referring to other support agencies e.g. Family Support Hub with parental consent and, where appropriate, with the child/young person's consent.

If a child protection referral is required, the Designated Teacher will seek consent from the parent/carer and/or the child {if they are competent to give this} unless this would place the child at risk of significant harm.

The Designated Teacher will phone the Gateway team and/or the PSNI and will submit a completed UNOCINI referral form.

Where appropriate the source of the concern will be informed of the action taken.

For further detail please see [Appendix 4](#)

**Where a Complaint Has Been Made about Possible Abuse by a Member of the School's Staff or a Volunteer**

When a complaint about possible child abuse is made against a member of staff the Principal (or the Designated Teacher if the Principal is not available) must be informed immediately. If the complaint is against the Principal, then the Designated Teacher should be informed and he/she will inform the Chairperson of the Board of Governors who will consider what action is required in consultation with the employing authority. The procedure as outlined in [Appendix 5](#) will be followed.

## **8 Consent**

Prior to making a referral to Social Services the consent of the parent/carers and/or the young person (if they are competent to give this) will normally be sought. The exception to this is where to seek such consent would put that child, young person or others at increased risk of significant harm or an adult at risk of serious harm, or it would undermine the prevention, detection or prosecution of a serious crime including where seeking consent might lead to interference with any potential investigation.

In circumstances where the consent of the parent/carer and/or the young person has been sought and is withheld we will consider and where possible respect their wishes. However, our primary consideration must be the safety and welfare of the child and we will make a referral in cases where consent is withheld if we believe on the basis of the information available that it is in the best interests of the child/young person to do so.

### **Confidentiality and Information Sharing**

Information given to members of staff about possible child abuse cannot be held "in confidence". In the interests of the child, staff have a responsibility to share relevant information about the protection of children with other professionals particularly the investigative agencies. In keeping with the principle of confidentiality, the sharing of information with school staff will be on a 'need to know' basis.

Where there have been, or are current, child protection concerns about a pupil who transfers to another school we will consider what information should be shared with the Designated Teacher in the receiving school.

Where it is necessary to safeguard children information will be shared with other statutory agencies in accordance with the requirements of this policy, the school data protection policy and the General Data Protection Regulations (GDPR)

### **Record Keeping**

In accordance with DE guidance we must consider and develop clear guidelines for the recording, storage, retention and destruction of both manual and electronic records where they relate to child protection concerns.

In order to meet these requirements all child protection records, information and confidential notes concerning pupils in Ardstraw Jubilee P.S. are stored securely and only the Designated Teacher/Deputy Designated Teacher and Principal have access to them. In accordance with DE guidance on the disposal of child protection records these records will be stored from child's date of birth plus 30 years.

If information is held electronically, whether on a PC, a laptop or on a portable memory device, all must be encrypted and appropriately password protected.

These notes or records should be factual, objective and include what was seen, said, heard or reported. They should include details of the place and time and who was present and should be given to the Designated/Deputy Designated Teacher. The person who reports the incident must treat the matter in confidence.

### **Day to Day Record Keeping**

Accidents- For minor accidents a record sheet will be filled out by the person supervising/or who witnessed the accident. This record has a duplicate; one copy will be sent home to the parent and the other will be a school record.

For a major accident the parent or next of kin will be notified immediately and a EA Accident Report form will be completed.

An Incident book is held by the Designated Teacher or Principal.

If an accident/incident happens in a classroom where there is no second adult present in the room, each teacher has a red card which one of the children will take to the Principal or another adult if the Principal is teaching or unavailable.

This red card will alert the Principal or staff member to come immediately.

### **9 Safe Recruitment Procedures**

Vetting checks are a key preventative measure in preventing unsuitable individuals' access to children and vulnerable adults through the education system and schools must ensure that all persons on school property are vetted, inducted and supervised as appropriate. All staff paid or unpaid who are appointed to positions in Ardstraw Jubilee P.S. are vetted/supervised in accordance with relevant legislation and Departmental guidance.

### **10 Code of Conduct for All Staff - Paid or Unpaid**

All actions concerning children and young people must uphold the best interests of the young person as a primary consideration. Staff must always be mindful of the fact that they hold a position of trust and that their behaviour towards the child and young people in their charge must be above reproach. All members of staff are expected to comply with the school's Code of Conduct for Employees and Volunteers which has been approved by the Board of Governors - [See Appendix 6](#)

### **11 The Preventative Curriculum**

The statutory personal development curriculum requires schools to give specific attention to pupils' emotional wellbeing, health and safety, relationships, and the development of a moral thinking and value system. The curriculum also offers a medium



to explore sensitive issues with children and young people in an age-appropriate way which helps them to develop appropriate protective behaviours. (2017/04).

Our school seeks to promote pupils' awareness and understanding of safeguarding issues, including those related to child protection through its curriculum. The safeguarding of children is an important focus in the school's personal development programme and is also addressed where it arises within the context of subjects. Furthermore, visual information is displayed directing a pupil on how to seek help, advice and support within the school and from external agencies and professionals.

Other initiatives which address child protection and safety issues:

- Online safety training in an age appropriate manner
- Year 5 children take part in the NI Fire and Rescue Service talks on fire safety
- Speak Out Stay Safe assembly and workshop provided by NSPCC every 2 years
- PAtHs - Promoting Alternative Thinking Strategies (PDMU)
- Helping Hands Programme
- Road Safety and Cycling Proficiency
- Eco-Schools Programme
- Respecting Rural Differences Programme - Year 1 and 2

1. *Our school seeks to promote pupils' awareness and understanding of safeguarding issues, including those related to child protection through its curriculum. The safeguarding of children is an important focus in the school's personal development programme and is also addressed where it arises within the context of subjects. Through the preventative curriculum we aim to build the confidence, self-esteem and personal resiliencies of children so that they can develop coping strategies and can make more positive choices in a range of situations.*
2. *Throughout the school year child protection issues are addressed through class assemblies and there is a permanent child protection notice board in the main corridor and foyer, which provides advice and displays child helpline numbers. Other initiatives which address child protection and safety issues: School visitors e.g. fire fighters, police etc.*

## **12 Monitoring and Evaluation**

This policy will be reviewed annually by the Safeguarding Team and approved by the Board of Governors for dissemination to parents, pupils and staff. It will be implemented through the school staff induction and training programme and as part of day to day practice. Compliance with the policy will be monitored on an on-going basis by the Designated Teacher for Child Protection and periodically by the Schools Safeguarding Team. The Board of Governors will also monitor child protection activity and the implementation of the Safeguarding and Child Protection policy on a regular basis through the provision of reports from the Designated Teacher.

## Appendix 1

### Specific Types of Abuse

**Grooming** of a child or young person is always abusive and/or exploitative. It often involves perpetrator(s) gaining the trust of the child or young person or, in some cases, the trust of the family, friends or community, and/or making an emotional connection with the victim in order to facilitate abuse before the abuse begins. This may involve providing money, gifts, drugs and/or alcohol or more basic needs such as food, accommodation or clothing to develop the child's/young person's loyalty to and dependence upon the person(s) doing the grooming. The person(s) carrying out the abuse may differ from those involved in grooming which led to it, although this is not always the case. Grooming is often associated with Child Sexual Exploitation (CSE) but can be a precursor to other forms of abuse. Grooming may occur face to face, online and/or through social media, the latter making it more difficult to detect and identify.

Adults may misuse online settings e.g. chat rooms, social and gaming environments and other forms of digital communications, to try and establish contact with children and young people or to share information with other perpetrators, which creates a particular problem because this can occur in real time and there is no permanent record of the interaction or discussion held or information shared. Those working or volunteering with children or young people should be alert to signs that may indicate grooming, and take early action in line with their child protection and safeguarding policies and procedures to enable preventative action to be taken, if possible, before harm occurs. Practitioners should be aware that those involved in grooming may themselves be children or young people, and be acting under the coercion or influence of adults. Such young people must be considered victims of those holding power over them. Careful consideration should always be given to any punitive approach or 'criminalising' young people who may, themselves, still be victims and/or acting under duress, control, threat, the fear of, or actual violence. In consultation with the PSNI and where necessary the PPS, HSC professionals must consider whether children used to groom others should be considered a child in need or requiring protection from significant harm

If the staff in Ardstraw Jubilee P.S. become aware of signs that may indicate grooming they will take early action and follow the school's child protection policies and procedures. The HSCT and PSNI should be involved as early as possible to ensure any evidence that may assist prosecution is not lost and to enable a disruption plan to reduce the victim's contact with the perpetrator(s) and reduce the perpetrator(s) control over the victim to be put in place without delay.

**Child sexual exploitation (CSE)** is a form of child sexual abuse. It occurs where an individual or group takes advantage of an imbalance of power to coerce, manipulate or deceive a child or young person under the age of 18 into sexual activity (a) in exchange for something the victim needs or wants, and/ or (b) for the financial advantage or increased status of the perpetrator or facilitator. The victim may have been sexually

exploited even if the sexual activity appears consensual. Child sexual exploitation does not always involve physical contact; it can also occur through the use of technology. (Co-operating to Safeguard Children and Young People in NI. DHSSPS version 2.0 2017).

Any child under the age of eighteen, male or female, can be a victim of CSE. Although younger children can experience CSE, the average age at which concerns are first identified is 12-15 years of age. Sixteen and seventeen year olds, although legally able to consent to sexual activity can also be sexually exploited.

CSE can be perpetrated by adults or by young people's peers, on an individual or group basis, or a combination of both, and can be perpetrated by females as well as males. While children in care are known to experience disproportionate risk of CSE, **the majority of CSE victims are living at home.**

### **Statutory Responsibilities**

CSE is a form of child abuse and, as such, any member of staff suspecting that CSE is occurring will follow the school's child protection policy and procedures, including reporting to the appropriate agencies.

### **Domestic and Sexual Violence and Abuse**

The Stopping Domestic and Sexual Violence and Abuse in Northern Ireland: A Seven Year Strategy (2016) defines domestic and sexual violence and abuse as follows:-

#### Domestic Violence and Abuse:

'threatening, controlling, coercive behaviour, violence or abuse (psychological, virtual, physical, verbal, sexual, financial or emotional) inflicted on anyone (irrespective of age, ethnicity, religion, gender, gender identity, sexual orientation or any form of disability) by a current or former intimate partner or family member.'

#### Sexual Violence and Abuse

'any behaviour (physical, psychological, verbal, virtual/online) perceived to be of a sexual nature which is controlling, coercive, exploitative, harmful, or unwanted that is inflicted on anyone (irrespective of age, ethnicity, religion, gender, gender identity, sexual orientation or any form of disability). Please note that coercive, exploitative and harmful behaviour includes taking advantage of an individual's incapacity to give informed consent.

If it comes to the attention of school staff that Domestic Abuse, is or may be, affecting a child this will be passed on to the Designated/Deputy Designated Teacher who has an obligation to share the information with the Social Services Gateway Team.

**Female Genital Mutilation (FGM)** is a form of child abuse and violence against women and girls. FGM comprises all procedures that involve partial or total removal of the external female genitalia, or other injury to the female genital organs for non-medical reasons.

The procedure is also referred to as 'cutting', 'female circumcision' and 'initiation'. The practice is medically unnecessary, extremely painful and has serious health consequences, both at the time when the mutilation is carried out and in later life. FGM is a form of child abuse and, as such, teachers have a statutory duty to report cases, including suspicion, to the appropriate agencies, through agreed established procedures set out in our school policy. Where there is a concern that a child or young person may be at immediate risk of FGM this should be reported to the PSNI without delay. Contact can be made directly to the Sexual Referral Unit (based within the Public Protection Unit) at 028 9025 9299. Where there is a concern that a child or young person may be at risk of FGM, referral should be made to the relevant HSCT Gateway Team.

**Forced Marriage** A forced marriage is a marriage conducted without the valid consent of one or both parties and where duress is a factor. Duress can include physical, psychological, financial, sexual and emotional pressure. Forced marriage is a criminal offence in Northern Ireland and if in Ardstraw Jubilee P.S. we have knowledge or suspicion of a forced marriage in relation to a child or young person we will contact the PSNI immediately.

### **Children Who Display Harmful Sexualised Behaviour**

Learning about sex and sexual behaviour is a normal part of a child's development. It will help them as they grow up, and as they start to make decisions about relationships. As a school we support children and young people, through the Personal Development element of the curriculum, to develop their understanding of relationships and sexuality and the responsibilities of healthy relationships. Teachers are often therefore in a good position to consider if behaviour is within the normal continuum or otherwise.

It must also be borne in mind that sexually harmful behaviour is primarily a child protection concern. There may remain issues to be addressed through the school's positive behaviour policy but it is important to always apply principles that remain child centred.

It is important to distinguish between different sexual behaviours - these can be defined as 'healthy', 'problematic' or 'sexually harmful'. Healthy sexual behaviour will normally have no need for intervention, however consideration may be required as to appropriateness within a school setting. Problematic sexual behaviour requires some level of intervention, depending on the activity and level of concern. For example, a one-off incident may simply require liaising with parents on setting clear direction that the behaviour is unacceptable, explaining boundaries and providing information and education. Alternatively, if the behaviour is considered to be more serious, perhaps because there are a number of aspects of concern, advice from the EA CPSS may be required. The CPSS will advise if additional advice from PSNI or Social Services is required. We will also take guidance from DE Circular 2016/05 to address concerns about harmful sexualised behaviour displayed by children and young people.

## What is Harmful Sexualised Behaviour?

Harmful sexualised behaviour is any behaviour of a sexual nature that takes place when:

- There is no informed consent by the victim; and/or
- The perpetrator uses threat (verbal, physical or emotional) to coerce, threaten or intimidate the victim
- Harmful sexualised behaviour can include: Using age inappropriate sexually explicit words and phrases.
- Inappropriate touching.
- Using sexual violence or threats.
- Sexual behaviour between children is also considered harmful if one of the children is much older - particularly if there is more than two years' difference in age or if one of the children is pre-pubescent and the other is not.
- However, a younger child can abuse an older child, particularly if they have power over them - for example, if the older child is disabled.

Sexually harmful behaviour is primarily a child protection concern. There may remain issues to be addressed through the school's positive behaviour policy but it is important to always apply principles that remain child centred.

Harmful sexualised behaviour will always require intervention and we will follow the procedures in the child protection policy and, seek support from the EA CPSS.

## E Safety/Internet Abuse

Online safety means acting and staying safe when using digital technologies. It is wider than simply internet technology and includes electronic communication via text messages, social environments and apps, and using games consoles through any digital device. In all cases, in schools and elsewhere, it is a paramount concern.

In January 2014, the SBNI published its report 'An exploration of e-safety messages to young people, parents and practitioners in Northern Ireland' which identified the associated risks around online safety under four categories:

- **Content Risks:** the child or young person is exposed to harmful material.
- **Contact risks:** the child or young person participates in adult initiated online activity.
- **Conduct Risks:** the child or young person is a perpetrator or victim in peer-to-peer exchange.
- **Commercial Risks:** the child or young person is exposed to inappropriate commercial advertising, marketing schemes or hidden costs.

We in Ardstraw Jubilee P.S. have a responsibility to ensure that there is a reduced risk of pupils accessing harmful and inappropriate digital content and will be energetic in

teaching pupils how to act responsibly and keep themselves safe. As a result, pupils should have a clear understanding of online safety issues and, individually, be able to demonstrate what a positive digital footprint might look like.

The school's actions and governance of online safety are reflected clearly in our safeguarding arrangements. Safeguarding and promoting pupils' welfare around digital technology is the responsibility of everyone who comes into contact with the pupils in the school or on school-organised activities.

**Sexting** is the sending or posting of sexually suggestive images, including nude or semi-nude photographs, via mobile or over the internet. There are two aspects to Sexting:

### **1/Sexting between Individuals in a Relationship**

Pupils need to be aware that it is illegal, under the Sexual Offences (NI) Order 2008, to take, possess or share 'indecent images' of anyone under 18 even if they are the person in the picture (or even if they are aged 16+ and in a consensual relationship) and in these cases we will contact local police on 101 for advice and guidance. We may also seek advice from the EA Child Protection Support Service

Please be aware that, while offences may technically have been committed by the child/children involved, the matter will be dealt with sensitively and considering all of the circumstances and it is not necessarily the case that they will end up with a criminal record. It is important that particular care is taken in dealing with any such cases. Adopting scare tactics may discourage a young person from seeking help if they feel entrapped by the misuse of a sexual image.

### **2/Sharing an Inappropriate Image with an Intent to Cause Distress**

If a pupil has been affected by inappropriate images or links on the internet it is important that it is **not forwarded to anyone else**. Schools are not required to investigate incidents. It is an offence under the Criminal Justice and Courts Act 2015 ([www.legislation.gov.uk/ukpga/2015/2/section/33/enacted](http://www.legislation.gov.uk/ukpga/2015/2/section/33/enacted)) to share an inappropriate image of another person without the individual's consent.

If a young person has shared an inappropriate image of themselves that is now being shared further whether or not it is intended to cause distress, the child protection procedures of the school will be followed.

## Appendix 2

### Children with Increased Vulnerabilities

- **Children with a Disability**

Children and young people with disabilities (i.e. any child or young person who has a physical, sensory or learning impairment or a significant health condition) may be more vulnerable to abuse and those working with children with disabilities should be aware of any vulnerability factors associated with risk of harm, and any emerging child protection issues.

Staff must be aware that communication difficulties can be hidden or overlooked making disclosure particularly difficult. Staff and volunteers working with children with disabilities will receive training to enable them to identify and refer concerns early in order to allow preventative action to be taken.

- **Children with Limited Fluency in English**

Children whose first language is not English/Newcomer pupils should be given the opportunity to express themselves to a member of staff or other professional with appropriate language/communication skills, especially where there are concerns that abuse may have occurred. DTs and other relevant school staff should seek advice and support from the EA's Intercultural Education Service if necessary. All schools should create an atmosphere in which pupils with special educational needs which involve communication difficulties, or pupils for whom English is not their first language, feel confident to discuss these issues or other matters that may be worrying them.

- **Gender Identity Issues and Sexual Orientation**

Schools should strive to provide a happy environment where all young people feel safe and secure. All pupils have the right to learn in a safe and secure environment, to be treated with respect and dignity, and not to be treated any less favourably due to their actual or perceived sexual orientation. DE requires all grant-aided schools to develop their own policy on how they will address Relationships and Sexuality Education (RSE) within the curriculum. It is via this policy that schools are expected to cover issues relating to relationships and sexuality, including those affecting LGB&T children and young people

As a staff working with young people from the LGBTQ+ community we will support them to appropriately access information and support on healthy relationships and to report any concerns or risks of abuse or exploitation.

Follow links for further information.

<https://www.eani.org.uk/sites/default/files/2018-10/Cara%20Friend.%20LGBTQ%2B%20Inclusive%20Schools%20Programme.pdf>

[https://www.eani.org.uk/sites/default/files/2019-10/EA%20Guidance%20on%20supporting%20transgender%20young%20people\\_FINAL\\_FINAL\\_24.10.19.pdf](https://www.eani.org.uk/sites/default/files/2019-10/EA%20Guidance%20on%20supporting%20transgender%20young%20people_FINAL_FINAL_24.10.19.pdf)

<https://ccea.org.uk/learning-resources/relationships-and-sexuality-education-rse/lgbtq-matters>

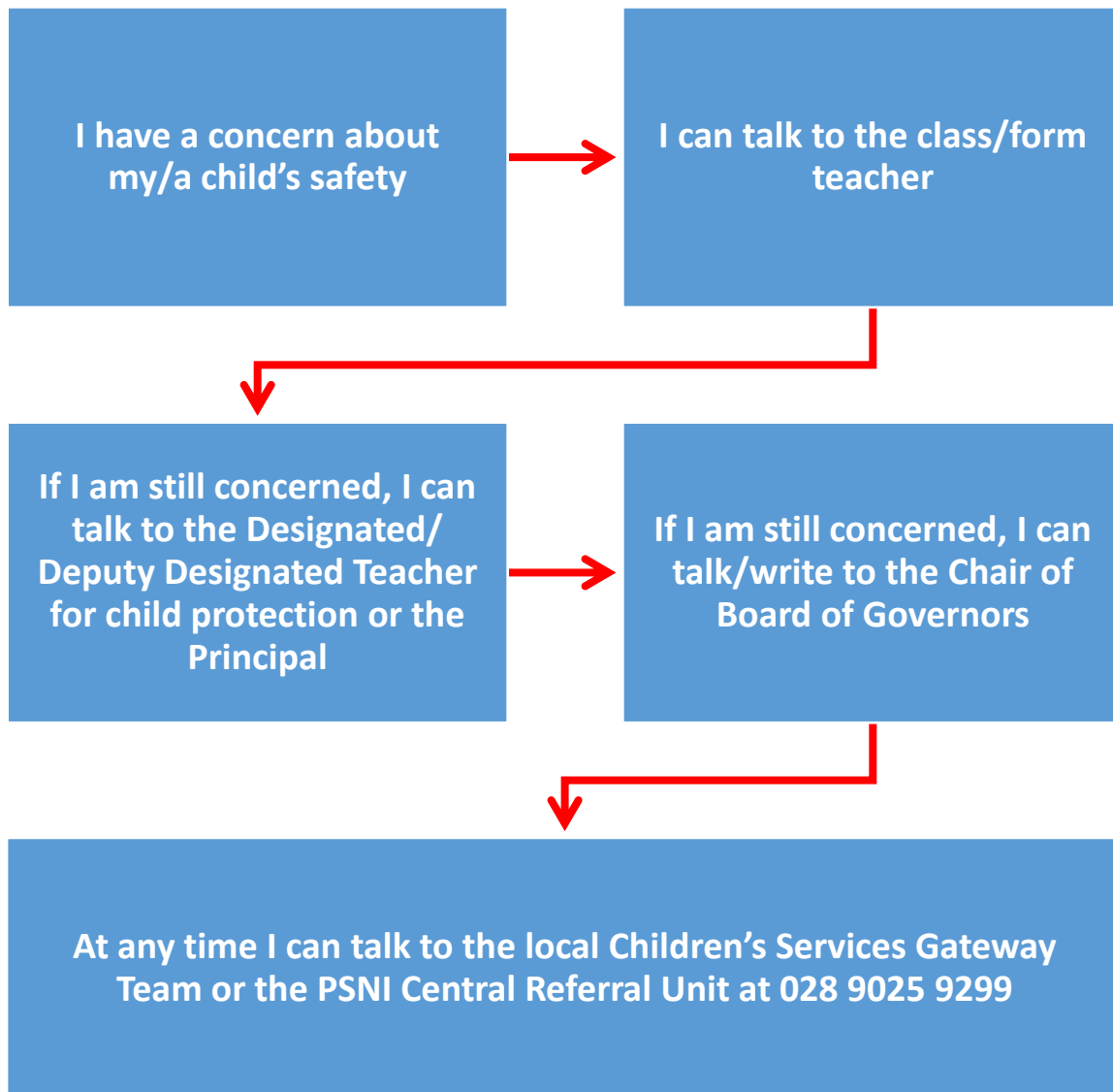
- **Work Experience, School Trips and Educational Visits**

Our duty to safeguard and promote the welfare of children and young people also includes periods when they are in our care outside of the school setting. We will follow DE guidance on educational visits, school trips and work experience to ensure our current safeguarding policies are adhered to and that appropriate staffing levels are in place.



### Appendix 3

#### How a Parent can raise a potential Child Protection Concern:



If you have escalated your concern as set out in the above flowchart, and are of the view that it has not been addressed satisfactorily, you may revert to the school's complaints policy. This policy should culminate in the option for you to contact the NI Public Services Ombudsman (NIPSO) who has the legislative power to investigate your complaint.

If a parent has a concern about a child's safety or suspect child abuse within the local community, it should be brought directly to the attention of the Children's Services Gateway Team.

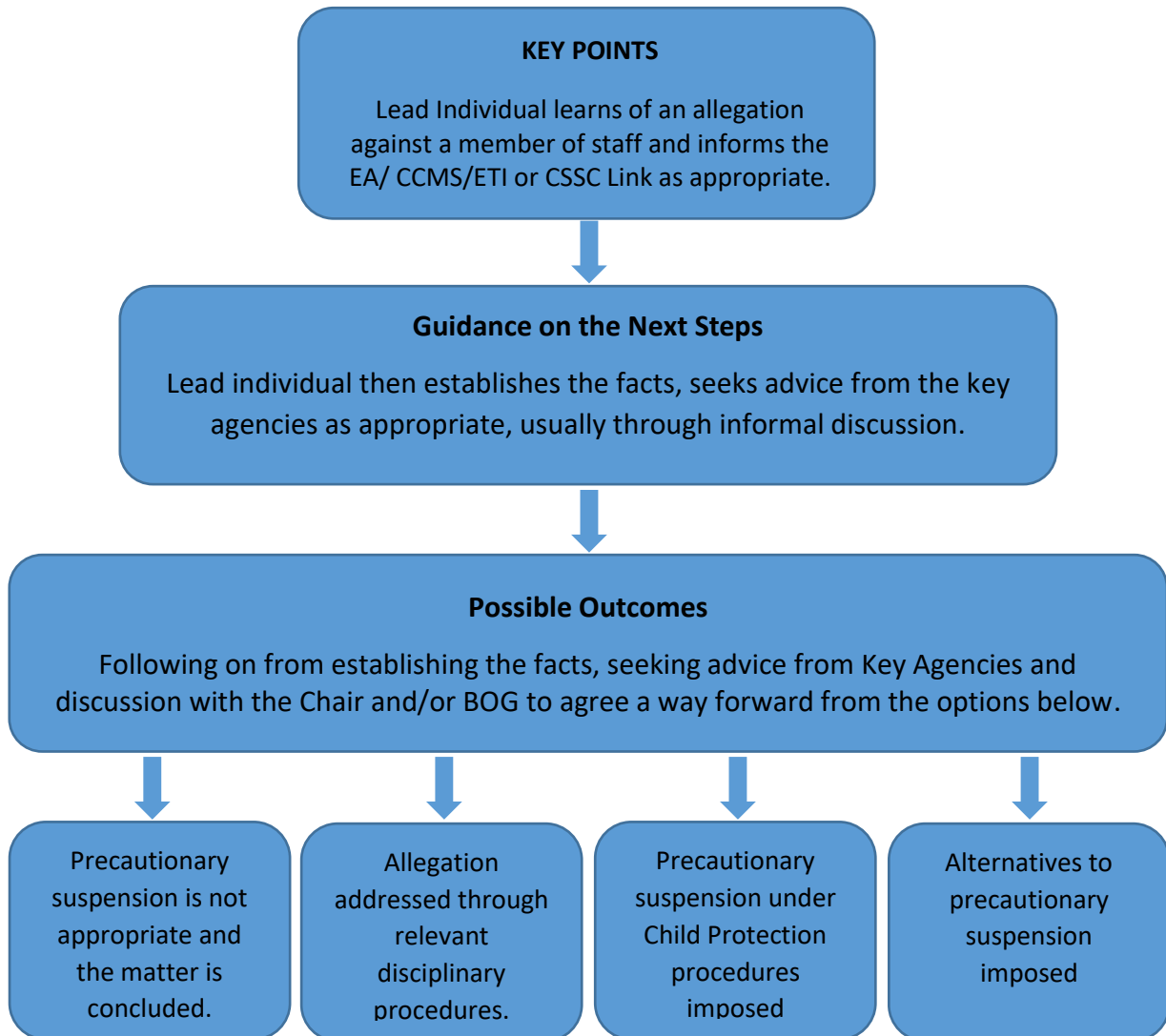
## Appendix 4

### Procedure Where the School Has Concerns, or Has Been Given Information, about Possible Abuse by Someone Other Than a Member of Staff



## APPENDIX 5

### Dealing with Allegations of Abuse Against a Member of Staff



### Private Meetings with Pupils

- Staff should be aware of the dangers which may arise from private interviews with individual pupils. It is recognised that there will be occasions when confidential interviews must take place. As far as possible, staff should conduct such interviews in a room with visual access, or with the door open.
- Where such conditions cannot apply, staff are advised to ensure that another adult knows that the interview is taking place. It may be necessary to use a sign indicating that the room is in use, but is not advisable to use signs prohibiting entry to the room.
- Where possible another pupil or (preferably) another adult should be present or nearby during the interview, and the school should take active measures to facilitate this.

### Physical Contact with Pupils

- As a general principle, staff are advised not to make unnecessary physical contact with their pupils.
- It is unrealistic and unnecessary, however, to suggest staff should touch pupils only in emergencies. In particular, a distressed child, especially a younger child, may need reassurance involving physical comforting, as a caring parent would provide. Staff should not feel inhibited from providing this.
- Staff should never touch a child who has clearly indicated that he/she is, or would be, uncomfortable with such contact, unless it is necessary to protect the child, others or property from harm.
- Physical punishment is illegal, as is any form of physical response to misbehaviour, unless it is by way of necessary restraint.
- Staff who have to administer first-aid to a pupil should ensure wherever possible that this is done in the presence of other children or another adult. *However, no member of staff should hesitate to provide first-aid in an emergency simply because another person is not present.*
- Any physical contact which would be likely to be misinterpreted by the pupil, parent or other casual observer should be avoided.
- Following any incident where a member of staff feels that his/her actions have been, or may be, misconstrued, a written report of the incident should be submitted immediately to his/her line manager.
- Staff should be particularly careful when supervising pupils in a residential setting, or in approved out-of-school activities, where more informal relationships tend to be usual and where staff may be in proximity to pupils in circumstances very different from the normal school/work environment.

### **Choice and Use of Teaching Materials**

- Teachers should avoid teaching materials the choice of which might be misinterpreted and reflect upon the motives for the choice.
- When using teaching materials of a sensitive nature a teacher should be aware of the danger that their application, either by pupils or by the teacher, might after the event be criticised. Schools have already received advice on the value of consulting parents and Governors when proposing to use materials such as the AIDS education for schools and in connection with sex education programmes.
- If in doubt about the appropriateness of a particular teaching material, the teacher should consult with the principal before using it.

### **Relationships and Attitudes**

Within the Pastoral Care Policies of the school and the employing authority, staff should ensure that their relationships with pupils are appropriate to the age, maturity and sex of the pupils, taking care that their conduct does not give rise to comment or speculation. Attitudes, demeanour and language all require care and thought, particularly when staff are dealing with adolescent boys and girls.

### **Conclusion**

It would be impossible and inappropriate to lay down hard and fast rules to cover all the circumstances in which staff interrelate with children and young people, or where opportunities for their conduct to be misconstrued might occur.

From time to time it will be prudent for all staff to reappraise their teaching styles, relationships with children/young people and their manner and approach to individual children/young children, to ensure that they give no grounds for doubt about their intentions, in the minds of colleagues, of children/young people or of their parents/guardians.

Appendix 7

CONFIDENTIAL

NOTE OF CONCERN

Child Protection Record - Reports to Designated Teacher

Name of Pupil:
Year Group:
Date, Time of Incident/Disclosure:
Circumstances of Incident/Disclosure:
Nature And Description Of Concern:
Parties involved, including any witnesses to an event and what was said or done and by whom:
Action Taken At The Time:
Details of Any Advice Sought, From Whom and When:

Any Further Action Taken:
Written Report Passed to Designated Teacher:                      Yes:                      No: If 'No' state reason:
Date And Time of Report to The Designated Teacher:
Written Note from Staff Member Placed On Pupil's Child Protection File  Yes                      No  If 'No' state reason:

**Name of Staff Member Making the Report:** \_\_\_\_\_

**Signature of Staff Member** \_\_\_\_\_ **Date:** \_\_\_\_\_

**Signature of Designated Teacher:** \_\_\_\_\_ **Date:** \_\_\_\_\_

Annex to Child Protection Policy  
COVID-19 changes to our Child Protection Policy

Response to COVID-19

Over the last two years there have been significant changes within our setting in response to the Covid 19 outbreak.

Despite the changes, the school's Child Protection Policy is fundamentally the same: children and young people always come first, staff should respond robustly to safeguarding concerns and contact the DT in line with our established safeguarding procedure.

This annex sets out some of the adjustments we are making in line with the changed arrangements in the school and following advice from government and local agencies.

Reporting arrangements **remain unchanged**

The school arrangements continue in line with our child protection policy.

The Designated Teacher (DT) is: Mrs Alison Porter

The Deputy Designated Teacher (DDT) is: Mrs Debby McGerrigle

Staff will continue to follow the Child Protection procedure and advise the safeguarding leads immediately about concerns they have about any child, whether in school or not. COVID-19 means a need for increased vigilance due to the pressures on services, families and young people, rather than a reduction in our standards.

Children's services may be affected by the impact of the virus on staff and an increased demand for services.

Should a child in the school's view be at risk of significant harm and local agencies are not able to respond, the school will immediately follow the safeguarding children partnership escalation procedure

Identifying vulnerability

<https://www.education-ni.gov.uk/news/new-vulnerable-children-guidance-published-schools-and-parents>

**Risk Online**

Children will be using the internet more if they are learning from home. The school may also use online approaches to deliver training or support. Staff will be aware of the signs and signals of cyberbullying and other risks online and apply the same child-centred safeguarding practices as when children were learning at the school.

- The school continues to ensure appropriate filters and monitors are in place
- Our Board of Governors will review arrangements to ensure they remain appropriate



- Staff have discussed the risk that professional boundaries could slip during this exceptional period and been reminded of the school's code of conduct and importance of using school systems to communicate with children and their families.
- Children and young people accessing remote learning receive guidance on keeping safe online and know how to raise concerns with the school, Childline, the UK Safer Internet Centre and CEOP.
- Parents and carers have received information about keeping children safe online with peers and the school. We have set out the school's approach, including the sites children will be asked to access and set out who from the school (if anyone) their child is going to be interacting with online. Parents have been offered the following links:
  - Internet matters - for support for parents and carers to keep their children safe online
  - Net-aware - for support for parents and careers from the NSPCC
  - Parent info - for support for parents and carers to keep their children safe online
  - Thinkuknow - for advice from the National Crime Agency to stay safe online
  - UK Safer Internet Centre - advice for parents and carers
- Free additional support for staff in responding to online safety issues can be accessed from the Professionals Online Safety Helpline at the UK Safer Internet Centre.

### **New staff or volunteers**

New starters must have an induction before starting or on their first morning with the DT or Principal. They must read the school child protection policy, the behaviour policy and the code of conduct. The DT or Principal will ensure new recruits know who to contact if worried about a child and ensure the new starters are familiar with the child protection procedure.

### **New children at the school**

Where children join our school from other settings, we will require confirmation from the DT whether they have a Safeguarding File or on the SEN on register. This file must be provided securely before the child begins at our school or as soon as possible. The Safeguarding Team will meet to discuss how best to keep the child safe if they are on Child Protection Register. In some unusual circumstance this may not be possible. Information provided must include contact details for any appointed social worker. Safeguarding information about children placed in our school will be stored securely in our safeguarding system.

The DT will undertake a risk assessment in respect of any new information received, considering how risks will be managed and which staff need to know about the information. This will be recorded on our safeguarding recording system.

